

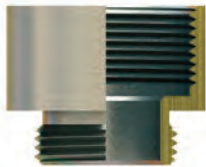
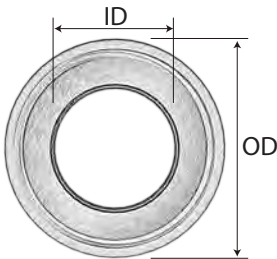
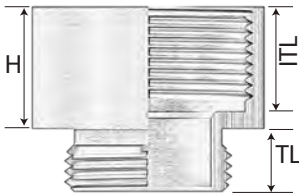
## Metal Enlargers

Nickel plated brass fittings, PG to PG, PG to metric, metric to PG

Metric & PG  
Thread

Enlargers are ideal when a threaded hole exists and you need to secure a larger thread or different style of thread. Made of nickel plated brass, SAB's enlargers are very durable.

Technical data:	
Material:	Brass, Nickel Plated
Attachment thread:	EN 60423 (Metric); DIN 40430 (PG)



Part Number	Thread Type OT (male)	Thread Type IT (female)	Inner Thread Length ITL inches	Outer Thread Length TL inches	Outer Diameter OD inches	Inner Diameter ID inches	Height (H) inches
<b>PG-PG</b>							
ENL-01	PG 7	PG 9	0.197	0.197	0.669	0.315	0.394
ENL-02	PG 9	PG 11	0.276	0.236	0.787	0.453	0.413
ENL-03	PG 9	PG 13.5	0.354	0.236	0.866	0.453	0.453
ENL-04	PG 11	PG 13.5	0.335	0.709	0.866	0.543	0.453
ENL-05	PG 11	PG 16	0.335	0.866	0.945	0.543	0.413
ENL-06	PG 11	PG 21	0.394	1.063	1.181	0.543	0.571
ENL-07	PG 13.5	PG 16	0.335	1.339	0.945	0.650	0.413
ENL-08	PG 13.5	PG 21	0.394	1.654	1.181	0.650	0.571
ENL-09	PG 16	PG 21	0.394	1.102	1.169	0.689	0.472
ENL-10	PG 16	PG 29	0.472	2.047	1.575	0.689	0.630
ENL-11	PG 21	PG 29	0.551	2.559	1.535	0.945	0.630
ENL-12	PG 29	PG 36	0.689	0.315	1.969	1.260	0.768
ENL-13	PG 36	PG 42	0.748	0.354	2.244	1.496	0.866
ENL-14	PG 42	PG 48	0.768	0.394	2.520	1.937	0.906
<b>PG-Metric</b>							
ENL-47	PG 7	M12x1.5	0.276	0.197	0.551	0.315	0.394
ENL-48	PG 9	M16x1.5	0.315	0.236	0.709	0.453	0.433
ENL-49	PG 11	M20x1.5	0.335	0.236	0.866	0.571	0.453
ENL-50	PG 13.5	M20x1.5	0.335	0.256	0.866	0.650	0.453
ENL-51	PG 16	M25x1.5	0.335	0.256	1.063	0.689	0.492
ENL-52	PG 21	M32x1.5	0.472	0.276	1.339	0.945	0.630
ENL-53	PG 29	M40x1.5	0.591	0.315	1.654	1.260	0.768
ENL-54	PG 29	M50x1.5	0.630	0.315	2.126	1.260	0.768
<b>Metric-PG</b>							
ENL-15	M12x1.5	PG 9	0.276	0.236	0.669	0.315	0.354
ENL-16	M16x1.5	PG 11	0.295	0.236	0.787	0.472	0.354
ENL-17	M20x1.5	PG 16	0.335	0.315	0.945	0.630	0.413
ENL-45	M25x1.5	PG 16	0.531	0.315	2.126	1.024	0.669
ENL-18	M25x1.5	PG 21	0.394	0.354	1.181	0.787	0.492
ENL-19	M32x1.5	PG 29	0.512	0.315	1.575	1.083	0.630
ENL-20	M40x1.5	PG 36	0.551	0.354	1.969	1.398	0.728
ENL-21	M50x1.5	PG 42	0.709	0.354	2.244	1.791	0.866
ENL-22	M63x1.5	PG 48	0.709	0.354	2.520	2.205	0.906

## Metal Enlargers

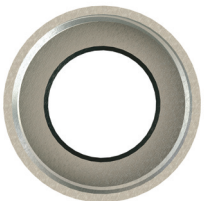
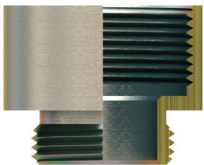
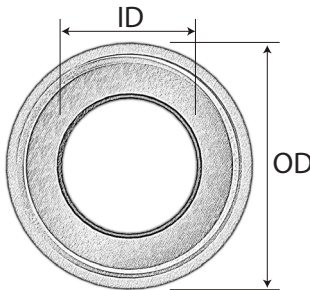
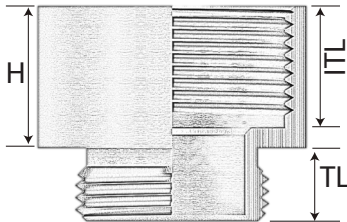
Nickel plated brass fittings, metric to metric, metric to NPT

Metric & NPT  
Thread

Enlargers are ideal when a threaded hole exists and you need to secure a larger thread or different style of thread. Made of nickel plated brass, SAB's enlargers are very durable.

### Technical data:

Material:	Brass, Nickel Plated
Attachment thread:	EN 60423 (Metric); DIN 40430 (PG)



Part Number	Thread Type OT (male)	Thread Type IT (female)	Inner Thread Length ITL inches	Outer Thread Length TL inches	Outer Diameter OD inches	Inner Diameter ID inches	Height (H) inches
<b>Metric-Metric</b>							
ENL-23	M12x1.5	M16x1.5	0.276	0.236	0.709	0.315	0.354
ENL-24	M16x1.5	M20x1.5	0.394	0.236	0.866	0.472	0.457
ENL-25	M20x1.5	M25x1.5	0.335	0.276	1.063	0.63	0.413
ENL-26	M25x1.5	M32x1.5	0.374	0.315	1.339	0.807	0.453
ENL-27	M32x1.5	M40x1.5	0.335	0.315	1.654	1.024	0.571
ENL-46	M32x1.5	M50x1.5	0.354	0.394	1.102	0.787	0.453
ENL-28	M40x1.5	M50x1.5	0.591	0.315	2.047	1.398	0.768
ENL-29	M50x1.5	M63x1.5	0.374	0.354	2.559	1.772	0.886
<b>Metric-NPT</b>							
ENL-30	M16x1.5	NPT 3/8	0.472	0.256	0.866	0.433	0.650
ENL-31	M16x1.5	NPT 1/2	0.551	0.256	0.945	0.433	0.709
ENL-32	M20x1.5	NPT 1/2	0.551	0.315	0.945	0.591	0.709
ENL-33	M20x1.5	NPT 3/4	0.551	0.315	1.181	0.591	0.709
ENL-34	M25x1.5	NPT 1/2	0.551	0.315	1.181	0.591	0.709
ENL-35	M25x1.5	NPT 3/4	0.551	0.315	1.181	0.709	0.709
ENL-36	M32x1.5	NPT 1/2	0.551	0.315	1.378	0.669	0.709
ENL-37	M32x1.5	NPT 3/4	0.591	0.315	1.378	0.906	0.709
ENL-38	M32x1.5	NPT 1	0.669	0.315	1.457	1.063	0.827
ENL-39	M40x1.5	NPT 1	0.787	0.315	1.693	1.063	0.827
ENL-40	M40x1.5	NPT 1 1/4	0.709	0.315	1.811	1.339	0.866
ENL-41	M50x1.5	NPT 1 1/4	0.709	0.315	2.165	1.417	0.906
ENL-42	M50x1.5	NPT 1 1/2	0.748	0.315	2.165	1.614	0.787
ENL-43	M63x1.5	NPT 1 1/2	0.709	0.354	2.677	1.654	0.906
ENL-44	M63x1.5	NPT 2	0.787	0.354	2.677	2.087	0.945